

LINE LINK Pendant-up&downward

# MH70FP





# MH70FP

## Basic Parameters

|          |                            |
|----------|----------------------------|
| Material | AL6063-T5,spraying surface |
| IP Grade | IP20                       |
| Warranty | 5 years                    |

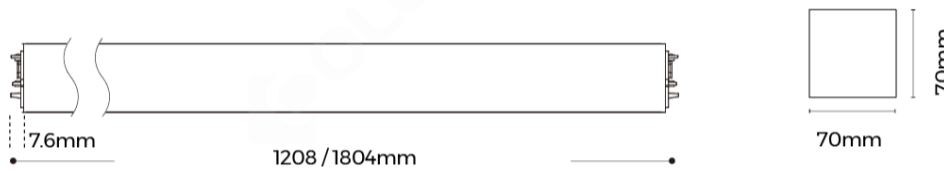
## Electrical Parameters

|               |  |
|---------------|--|
| Input Voltage | AC220-240V                             |
| Control       | Non-Dimming,1-10V Dimming,DALI Dimming |

## Optical Parameters

|                   |  |
|-------------------|--|
| Version           | Regular,High efficiency,Regular-3 CCT Dial Switch,High efficiency-3 CCT Dial Switch                                    |
| SDCM              | <3 Step (ANSI)   |
| Length            | 1200mm,1800mm  |
| CRI               | >80,>90  |
| CCT               | 2700K,3000K,4000K,6500K,3000K-4200K-6500K  |
| Luminous Efficacy | 110LM/W(Regular),100LM/W(Regular-3 CCT Dial switch) 135LM/W(High efficiency),115LM/W(High efficiency-3CCT Dial switch) |

## Dimensions



## Luminaire Parameters

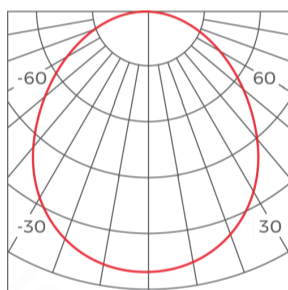
| Version                           | Length | Type Power (W) | PCB Current(A) | CRI | CCT               | Lumens(LM) @White, Silver | Lumens(LM) @Black |
|-----------------------------------|--------|----------------|----------------|-----|-------------------|---------------------------|-------------------|
| Regular                           | 1200mm | 47W            | 1.05           | >80 | 4000K             | 5170                      | 4653              |
| Regular                           | 1800mm | 70W            | 1.6            | >80 | 4000K             | 7700                      | 6930              |
| Regular                           | 1200mm | 47W            | 1.05           | >90 | 4000K             | 4461                      | 4015              |
| Regular                           | 1800mm | 70W            | 1.6            | >90 | 4000K             | 6645                      | 5980              |
| High-Efficiency                   | 1200mm | 47W            | 1.05           | >80 | 4000K             | 6345                      | 5710              |
| High-Efficiency                   | 1800mm | 70W            | 1.6            | >80 | 4000K             | 9450                      | 8505              |
| High-Efficiency                   | 1200mm | 47W            | 1.05           | >90 | 4000K             | 5837                      | 5253              |
| High-Efficiency                   | 1800mm | 70W            | 1.6            | >90 | 4000K             | 8694                      | 7824              |
| Regular-3 CCT Dial Switch         | 1200mm | 47W            | 1.05           | >80 | 3000K-4200K-6500K | 4230/4700/4465            | 3807/4230/4018    |
| Regular-3 CCT Dial Switch         | 1800mm | 70W            | 1.6            | >80 | 3000K-4200K-6500K | 6300/7000/6650            | 5670/6300/5985    |
| Regular-3 CCT Dial Switch         | 1200mm | 47W            | 1.05           | >90 | 3000K-4200K-6500K | 3637/4042/3839            | 3273/3637/3455    |
| Regular-3 CCT Dial Switch         | 1800mm | 70W            | 1.6            | >90 | 3000K-4200K-6500K | 5418/6020/5719            | 4876/5418/5147    |
| High efficiency-3 CCT Dial Switch | 1200mm | 47W            | 1.05           | >80 | 3000K-4200K-6500K | 5170/5405/5405            | 4653/4864/4864    |
| High efficiency-3 CCT Dial Switch | 1800mm | 70W            | 1.6            | >80 | 3000K-4200K-6500K | 7700/8050/8050            | 6930/7245/7245    |
| High efficiency-3 CCT Dial Switch | 1200mm | 47W            | 1.05           | >90 | 3000K-4200K-6500K | 4756/4972/4972            | 4280/4474/4474    |
| High efficiency-3 CCT Dial Switch | 1800mm | 70W            | 1.6            | >90 | 3000K-4200K-6500K | 7084/4574/4574            | 6375/4116/4116    |
| Regular                           | 1200mm | 47W            | 1.05           | >80 | 2700K             | 4394                      | 3955              |
| Regular                           | 1800mm | 70W            | 1.6            | >80 | 2700K             | 6545                      | 5890              |
| Regular                           | 1200mm | 47W            | 1.05           | >90 | 2700K             | 3779                      | 3401              |
| Regular                           | 1800mm | 70W            | 1.6            | >90 | 2700K             | 5628                      | 5065              |
| High-Efficiency                   | 1200mm | 47W            | 1.05           | >80 | 2700K             | 6027                      | 5424              |
| High-Efficiency                   | 1800mm | 70W            | 1.6            | >80 | 2700K             | 8977                      | 8079              |

|                 |        |     |      |     |       |      |      |
|-----------------|--------|-----|------|-----|-------|------|------|
| High-Efficiency | 1200mm | 47W | 1.05 | >90 | 2700K | 5545 | 4990 |
| High-Efficiency | 1800mm | 70W | 1.6  | >90 | 2700K | 8259 | 7433 |
| Regular         | 1200mm | 47W | 1.05 | >80 | 3000K | 4653 | 4187 |
| Regular         | 1800mm | 70W | 1.6  | >80 | 3000K | 6930 | 6237 |
| Regular         | 1200mm | 47W | 1.05 | >90 | 3000K | 4001 | 3601 |
| Regular         | 1800mm | 70W | 1.6  | >90 | 3000K | 5959 | 5363 |
| High-Efficiency | 1200mm | 47W | 1.05 | >80 | 3000K | 6345 | 5710 |
| High-Efficiency | 1800mm | 70W | 1.6  | >80 | 3000K | 9450 | 8505 |
| High-Efficiency | 1200mm | 47W | 1.05 | >90 | 3000K | 5837 | 5253 |
| High-Efficiency | 1800mm | 70W | 1.6  | >90 | 3000K | 8694 | 7824 |
| Regular         | 1200mm | 47W | 1.05 | >80 | 6500K | 5170 | 4653 |
| Regular         | 1800mm | 70W | 1.6  | >80 | 6500K | 7700 | 6930 |
| Regular         | 1200mm | 47W | 1.05 | >90 | 6500K | 4461 | 4015 |
| Regular         | 1800mm | 70W | 1.6  | >90 | 6500K | 6645 | 5980 |
| High-Efficiency | 1200mm | 47W | 1.05 | >80 | 6500K | 6345 | 5710 |
| High-Efficiency | 1800mm | 70W | 1.6  | >80 | 6500K | 9450 | 8505 |
| High-Efficiency | 1200mm | 47W | 1.05 | >90 | 6500K | 5837 | 5253 |
| High-Efficiency | 1800mm | 70W | 1.6  | >90 | 6500K | 8694 | 7824 |

1. The output data is based on the testing result of Ra80,4000k,white luminaires;
2. The tolerance of output data can be vary up to 10%;
3. The output data is typical value;

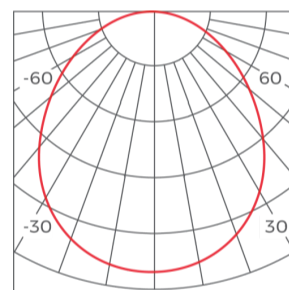
## Light Distribution

### Regular-90°



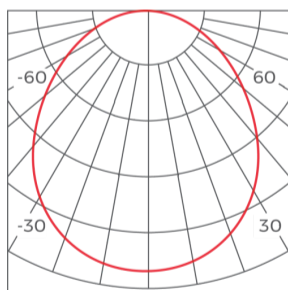
| h(m) | D(cm) | E(lx) |
|------|-------|-------|
| 1    | 200   | 1566  |
| 2    | 401   | 391   |
| 3    | 602   | 174   |
| 4    | 802   | 97    |

### High efficiency-90°



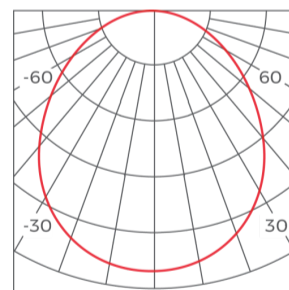
| h(m) | D(cm) | E(lx) |
|------|-------|-------|
| 1    | 202   | 1883  |
| 2    | 404   | 470   |
| 3    | 607   | 209   |
| 4    | 809   | 117   |

### Regular-3 CCT Dial Switch-90°



| h(m) | D(cm) | E(lx) |
|------|-------|-------|
| 1    | 202   | 1278  |
| 2    | 404   | 319   |
| 3    | 607   | 142   |
| 4    | 809   | 79    |

### High efficiency-3 CCT Dial Switch-90°



| h(m) | D(cm) | E(lx) |
|------|-------|-------|
| 1    | 201   | 1488  |
| 2    | 403   | 372   |
| 3    | 604   | 165   |
| 4    | 806   | 93    |

\*The above data is based on a white coated, 1200mm length lamp with Ra80,4000K.

## Common Accessories

### Standard Corner



#### MH70FP-L90

Applicable product model: MH70FP  
 Installation method: L-shaped 90° splicing  
 Material process: AL6063-T5/spraying  
 Coating: Black(RAL9006), White(RAL9003)  
 Diffuser Nature:Prismatic  
 Light efficiency:110LM/W(Regular),110LM/W(Regular-3CCT Dial switch)  
 150LM/W(High efficiency),135LM/W(High efficiency-3CCT Dial switch)  
 Light source: Constant Current Rigid PCB  
 Size: L300\*W70\*H70mm

## Power feeder



### CM-27

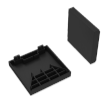
Applicable product model: MS50/MH50/MS70/MH70 Type: Non-dimming Input line(3PIN) Material process: Wiring cover: AL6061/Input line: PVC Size: Wiring cover: 113\*23.2\*1.5mm/Input line: 2200\*φ6mm Quantity: 1PCS/set Others: Including 1pcs wiring cover+1pcs input line



### CM-28

Applicable product model: MS50/MH50/MS70/MH70 Type: Dimming Input line(5PIN) Material process: Wiring cover: AL6061/Input line: PVC Size: Wiring cover: 113\*23.2\*1.5mm/Input line: 2200\*φ7.2mm Quantity: 1PCS/set Others: Including 1pcs wiring cover+1pcs input line

## End cap accessory



### EC-MS70

Applicable product model:MS70/MH70 Material process: ADC12/powder-coated Size: L70.2\*W70.7\*H17mm Quantity:2PCS/ set

## Installation accessory



### PN(E)-D

Applicable product model: LINE ECO series  
Installation method: Pendant  
Material process: Nickel plating  
Size: /  
Quantity: 2PCS/SET  
Other:2 meter wire rope 2PCS, cable locker 2PCS, cable holder 2PCS, M5 flat head Phillips screws 2PCS, M4\*35mm screws 2PCS, expansion tube 2PCS



### PN-DXX

Applicable product model: LS1911C/LS1911K/LS3535/LS5050/LS3360/LS4067/LS5470(F)/LS7977/LT60/BH3360/BH5470/BH7977/BS3360/BS5470/BS7977/LS5470(F)/LS7977/LT60/LINE40 series product/LINE60 series product/TLS-R6X0 track  
Installation method: Pendant  
Material process: Pearl Chrome  
Size: /  
Quantity: 2PCS/ set  
Other:Junction box not included, 2 pcs pendant cable accessory, pendant cable length 4m, rectangular screw model.



### PY(E)-D

Applicable product model: MS35/MH35/MS50/MH50/MS70/MH70  
Installation method: Junction Box (pendant wire)  
Material process: SPCC/Spraying surface  
Size: Box: D80\*30\*1mm, Pendant wire: D1.5\*2000/4000mm  
Quantity: 1 set  
Other:Including junction box, 2PCS wire rope, wire rope 2M/4M length optional

## Packing

| Size (mm/box) | Quantity /box | QTY/CTN | NW (kg/box) | N. WT (ctn) | G.WT (ctn) | Size (cm/carton) | Product Size (mm) |
|---------------|---------------|---------|-------------|-------------|------------|------------------|-------------------|
| 1205*95*80mm  | 1             | 4       | 1.8         | 7.2         | 8.5        | 122*18.5*17.5    | 1208*70*70mm      |
| 1815*95*80mm  | 1             | 4       | 2.85        | 11.4        | 13.1       | 182*18.5*17.5    | 1803*70*70mm      |

## Attentions

1. Non-professionals are prohibited from installing, disassembling and repairing the product.
2. Avoid scratching, distortion and irregular bending of the product during installation; otherwise it may cause irreparable damage to the product.
3. Please use professional cutting tools when cutting.
4. Do not use any acid or alkaline adhesive to fix products.
5. The product is only suitable for indoor dry places, can not be used in outdoor, seaside or wet environment.
6. PC features: Each 10°C rise or drop will make diffuser extend or shrink 0.8mm/m, please confirm before processing and use.